

UPDATED

Wollongong Camera Club Members' Field Trip

CARNIVAL AT FESTIVAL OF FISHER'S GHOST


Saturday 05 November 2022



Image credit: iStock



Est. 1944

Find us on 

What?	The Festival of Fisher's Ghost 2022 - Carnival
Where?	<p>Leumeah Commuter car park (NEW LOCATION DUE TO WEATHER) (Campbelltown area)</p> <p>Map</p> <p>Carpool, and get in early if you can. It is not clear how much parking is available. Follow signage.</p>
Stuff to see & do:	<p>Challenge yourself with changing light; long exposure, speed setting, ISO and so on. The Carnival starts at 2pm, but goes into the night :)</p> <p>Daredevil rides Kiddies Carnival Alley Sideshow Alley Delicious foods and desserts Show bags</p> <p>Also on this day, as part of the Festival:</p> <ul style="list-style-type: none"> • Fisher's Ghost Art Award Exhibition - more info • Rooftop Rollin' (Roller Skating) - more info • Sunset Sounds - more info
Date(s)	Saturday 05 November 2022
Meeting place & time	Sign in at 2pm , at train station.
Travel time	Approximately 50 minutes' drive from Wollongong CBD, via Appin
Weather permitting?	This will be at the discretion of the Festival organiser.
Cost	<p>Entry to the Carnival is free.</p> <p>Rides and food are available to purchase.</p>
Booking or RSVP required?	NO - but please contact Kaz Childs on 0414 377 999 if you are going to be late for sign-in at 2pm.

Continued 

Extra things to bring

- Tripod and/or monopod for panning
- Remote shutter release if you have one
- Small torch
- Insect repellent
- Cash, just in case

Important notes

- If COVID restrictions are in place, then please follow any/all NSW State Government health orders.
- Do not attend if you are feeling unwell.
- Closed-in footwear is a requirement for all field trips (no thongs, sandals, etc)

Info/links

[Carnival at Festival of Fisher's Ghost](#)

Group Leader / Contact

Kaz Childs
0414 377 999
marketing.wollongongcameraclub@gmail.com

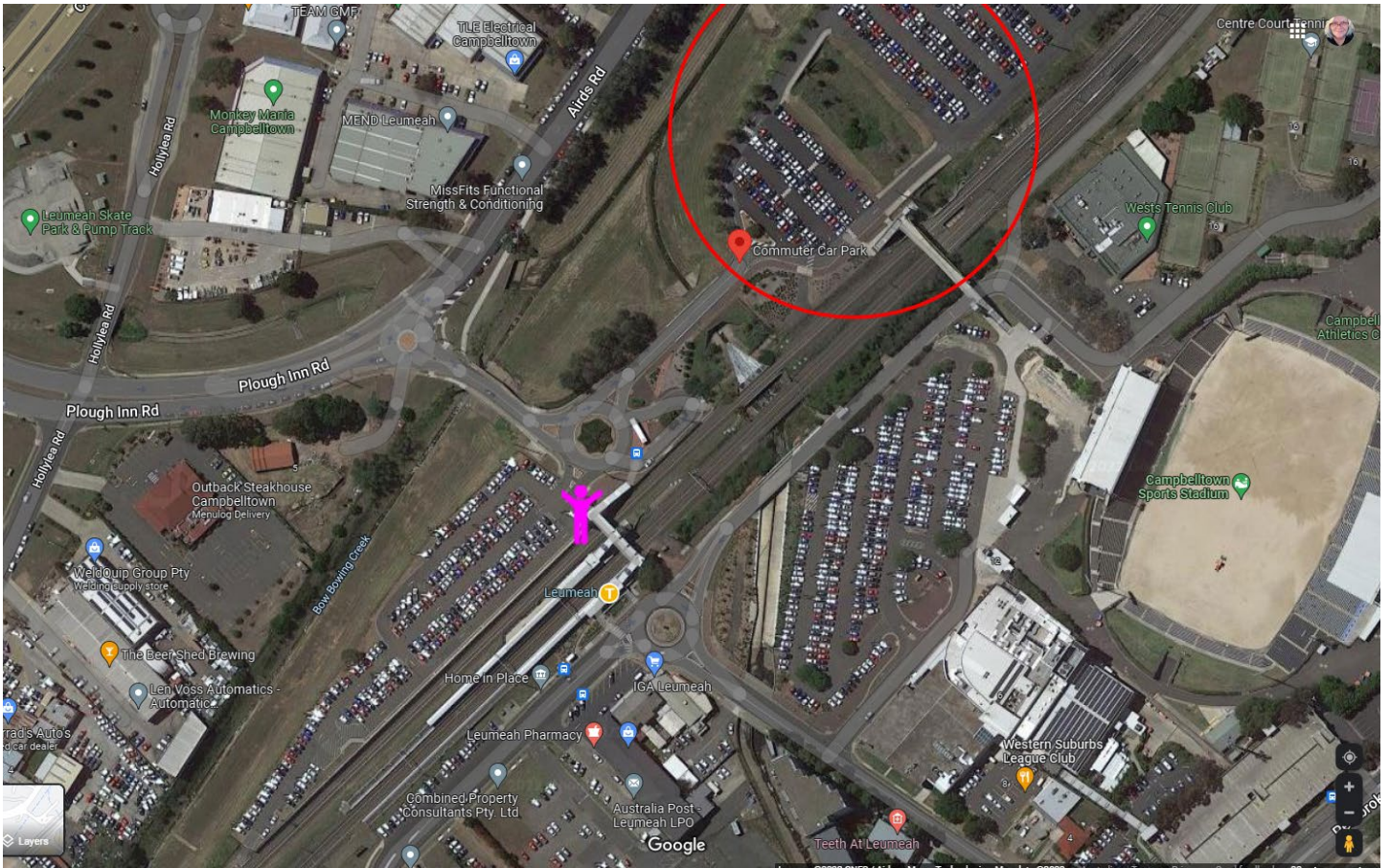
Additional notes

Wollongong Camera Club complies with NSW Government health orders. Any information relating to these orders and/or restrictions in this document is correct at the time of writing and Club Members will be advised of any significant changes via email. For further information and regular updates, please visit <https://www.nsw.gov.au/>

Continued 

Map(s)

[Get directions](#)



Meeting point - in front of train station

